



UPS ENERGY BATTERY / E Series

Top performance, small weight!

12V / 7 – 14 Ah

Ultra-light energy batteries based on lithium iron phosphate technology LiFePO₄. Specifically designed for applications which require high energy, high useful cycles and a big depth of discharge such as alarm systems, UPS and electric mobility. Same shape of the traditional lead acid battery and fast on terminal.



- Alarm Systems
- Back up supply for 12V systems
- Avionics and power supply for electronic equipment and radio

This family of product is suitable for replacing every kind of Lead Acid battery installed at present without making any change to the existing electrical system.

Exclusive features

- Weight reduction: 50% lighter than a traditional battery
- Ultra rapid complete charge: 100% in less than 30'
- Ultra rapid partial charge: 50% in less than 10'
- Lowest self-discharge rate: < 0,03 % daily (offline battery)
- Longer life cycle: 5 to 10 times higher than traditional batteries
- Fit any mounting position
- Very good behavior at high temperature

Eco-compatible and Safe

- Lithium iron phosphate cells LiFePO₄ for maximum safety
- Integrated electronics to protect from overload
- No liquids inside
- Low environmental impact materials
- Free from lead and other harmful materials according to ROHS
- Robust ABS recyclable case in PE-PP

Quality

- Quality Control carried out separately for each production step
- Automated assembling
- Cutting-edge components

www.go-aliant.com

Certifications

- CE Conformity

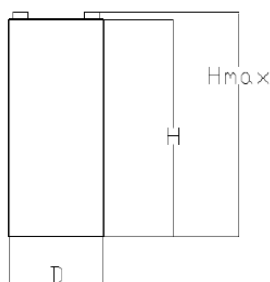
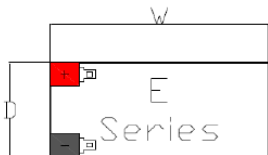
Wall charger (optional)

- Battery can be charged by electric grid using **ONLY** wall charger **Aliant™**

Technical Specifications

Model	12V7	12V9	12V12	12V14
Capacity	7 Ah	9 Ah	12 Ah	14 Ah
Nominal Voltage	12,8V			
Max discharge current (1s)	15 A	15 A	24 A	24 A
Continuous discharge current	7 A	7 A	12 A	12 A
Nom. charge current @ 25°C	3 A	3 A	6 A	6 A
Max charge current @ 25°C	7 A	7 A	12 A	12 A
Life cycles (charge / discharge 1C)	2000 cycles@ 80% D.o.d.			
Life	5-7 years			
Charging voltage	14,4 V			
Max charging voltage	14,6 V			
Min discharging voltage	10 V			
Weight	≈ 1.2 Kg	≈ 1.3 Kg	≈ 1,9 Kg	≈ 2,0 Kg
Dimensions [mm]	W 150 x D 65 x H 100	W 150 x D 65 x H 100	W 151 x D 98 x H 100	W 151 x D 98 x H 100
Temperature	-30°C / +50°C [operative and storage]			

12V7 / 12V14



Model	W	D	H
12V7/9	150	65	100
12V12/14	151	98	100



www.go-aliant.com



Recharge these batteries with ALIAN'T™ charger; the use of other chargers / maintainers charge must be previously verified with technical support Aliant.
Do not short-circuit. **Please read the instruction manual before use.** ELSA Solutions reserves the right to modify these without notice.
The Aliant™ E batteries are not approved for street use on cars.

CUSTOM ENERGY BATTERY / E SERIES



Top performance, small weight!!!

3.2 – 24V / 2.3 – 2.5 – 3.3 Ah – other capacities available on demand

Ultralight energy batteries based on lithium iron phosphate technology LiFePO4. Custom projects configuration for OEM which require high energy, high useful cycles and a big depth of discharge such as medical and portable devices.



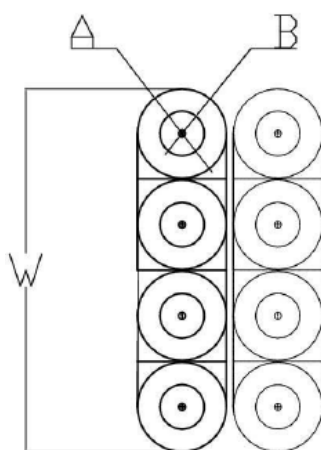
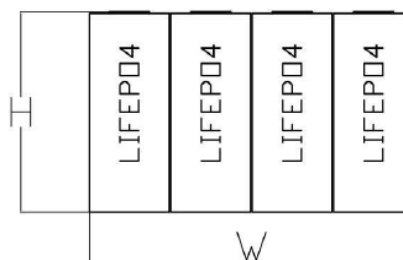
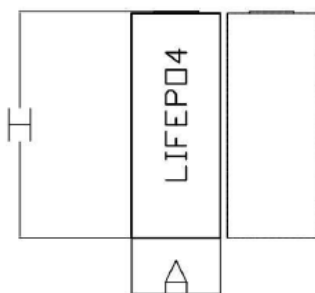
Cylindrical or Prismatic Cell depending on custom application

Technical Specifications

Model	2.3 Ah	2.5 Ah	3.3 Ah
Nominal Voltage	3.3 V	3.3 V	3.2 V
Max discharge current (10s)	120 A	120 A	10 A
Max continuous discharge current	70 A	70 A	3 A
Nom. charge current @ 25°C	3 A	3 A	1.5 A
Max charge current @ 25°C	10 A	10 A	3 A
Lifecycle (charge / discharge 1C)	2000 cycles@ 80% D.o.d.		
Life	5-7 years		
Charging voltage	3.7 V	3.7 V	3.6 V
Max charging voltage	3.8 V	3.8 V	3.7 V
Min discharging voltage	1.6 V	1.6 V	2.5 V
Weight	≈ 0.070 Kg	≈ 0.076 Kg	≈ 0.080 Kg
Dimensions [mm]	∅ 26 x H 65	∅ 26 x H 65	∅ 26.2 x H 65
Temperature	-30°C / +50°C [operative and storage]		

Configurations are available depending on customer application:

- **Series** configurations up to **24 V**
- **Parallel** configurations up to **10 Ah**
- **Cylindrical / Prismatic** cell based on Customer Battery Case
- **Printed Circuit Board (PCB)** for over current, over charge and under discharge protection
- **Overtemperature control (optional)** for cell temperature monitoring



Dimensions	[mm]
<i>W</i>	N * 27
<i>A</i>	27
<i>B</i>	12.9
<i>H</i>	70